

# VALV-TROL PILOT-OPERATED CHECK VALVES

## FOR WATER, 95/5, OIL OR OTHER LIQUIDS

The **Valv-Trol Pilot Operated Check Valve** is based on standard components, but optimized for individual applications. The port connections, pilot actuators, and pressure ratings (2,000 PSI /138 Bar standard) can be specified to best handle the operating conditions.

These valves are often used as safety shut-off valves on the outlet ports of "gas over liquid" type hydraulic accumulators. The valve can be closed quickly to prevent any gas from getting into the main lines during periods of high demand.

They are also used as prefill or dump valves for large hydraulic presses or cylinders. A small integral de-compression valve can be specified to bleed off the high pressure before the main valve opens. This can help reduce the shock of opening a large valve under high pressure.

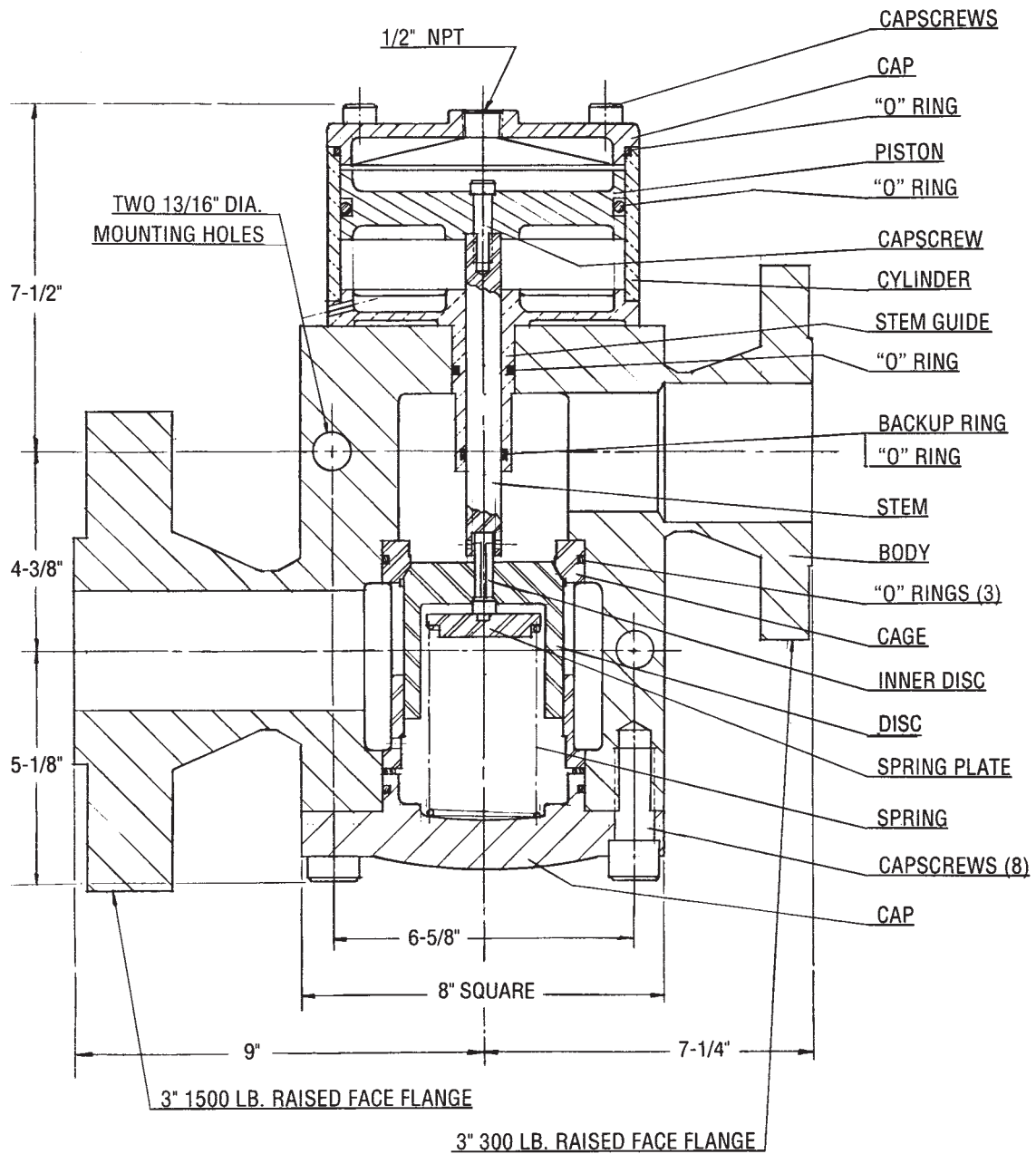
The operation of this valve is very similar to a standard spring loaded check valve, but with one important difference: The pilot cylinder can, when actuated, hold the valve open so that fluid may flow freely in either direction. When the pilot pressure is removed, the flow in one direction is stopped just as in a check valve.



Model	Basic Size	Cv	Ports	Pilot Actuator	Max. PSI
D-1164	2"	60.0	As Specified	Hyd. or Air	As Specified
D-1260	3"	100.0	As Specified	Hyd. or Air	As Specified
D-1282	4"	160.0	As Specified	Hyd. or Air	As Specified
D-1274	5"	240.0	As Specified	Hyd. or Air	As Specified
D-1268	6"	310.0	As Specified	Hyd. or Air	As Specified
D-1264	8"	665.0	As Specified	Hyd. or Air	As Specified

Our valves are all subjected to 100% pressure testing to ensure a drop tight seal before we ship to our customers.

**THE VALV-TROL COMPANY • 1340 COMMERCE DRIVE • STOW, OHIO 44224**  
 Phone: 800-497-2136 • Fax: (330) 686-2820 • E-mail: sales@valv-trol.com • www.valv-trol.com



D-1260-H 3"-3,000 PSI (207 Bar) pre-fill valve shown with optional decompression feature.

Give us your exact requirements so that we can recommend the proper model for you.

THE VALV-TROL CO., STOW, OHIO